



Student Health Needs and the Impact on Learning

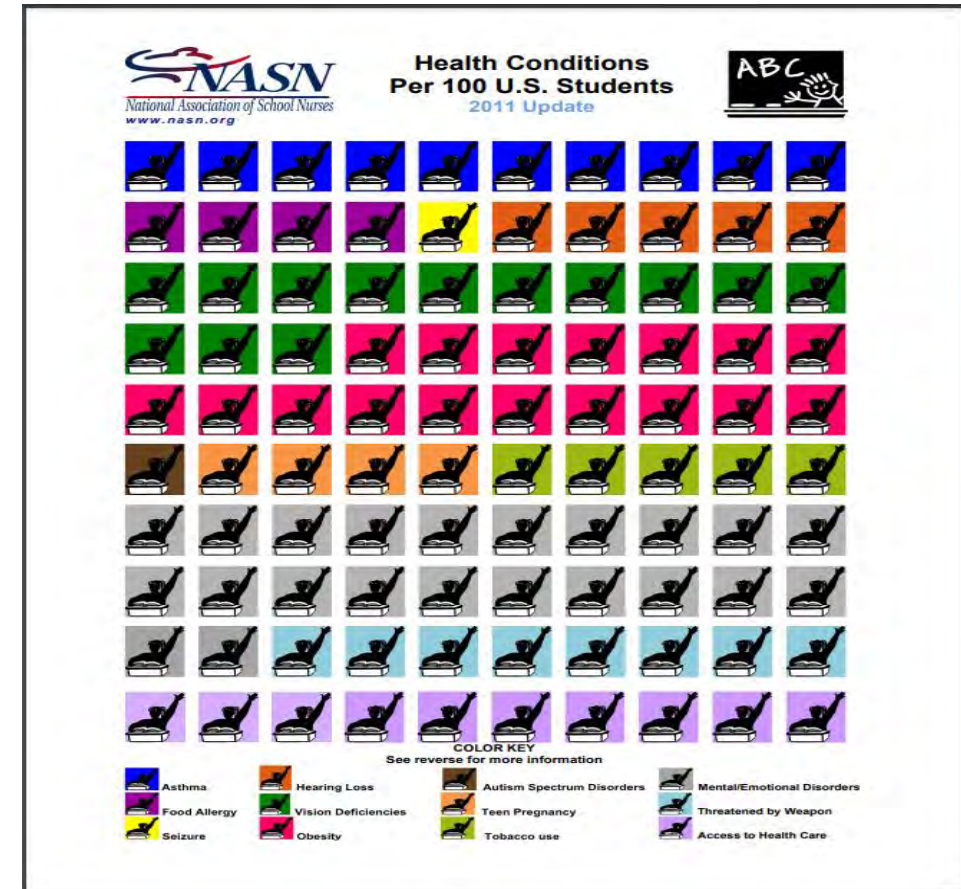
School Boards can support those needs

- Tara Swaby, School Nurse Consultant, Minnesota Dept. of Education
- Denise Herrmann, School Nurse Consultant, Minnesota Dept. of Health
- Tara Cliff, President, School Nurse Organization of Minnesota
- Mageen Caines, School Board Director, St. Anthony- New Brighton

Current Reality

Students have health needs impacting attendance, ability to access learning opportunities, and their connectedness to the school community.

The inequities in education are directly impacted by health needs of students.



School Nurse / Teacher Comparison

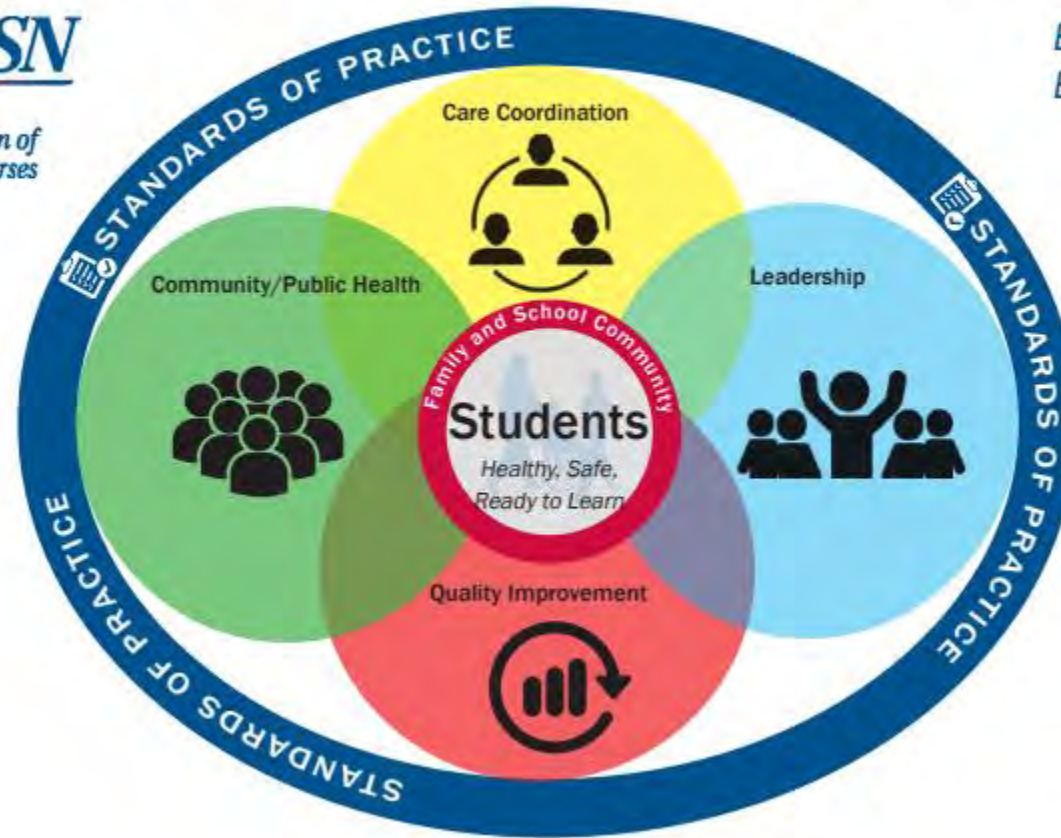
| | LICENSED PROFESSIONAL | TRAINED | UNLICENSED |
|-----------------------|---|--|--|
| Nurse | <p>Professional Nurse is a Registered Nurse (RN) and Public Health Nurse (PHN) by the Board of Nursing (BON)</p> <p>Licensed School Nurse (LSN) is licensed by PELSB and is an RN and PHN</p> | Licensed Practical Nurse (LPN) by BON | <p>Health Para</p> <p>Health Clerk</p> <p>Health Assistant</p> |
| Teacher | Licensed Teacher by PELSB | Educational Assistants | <p>Teachers Aide</p> <p>Paraprofessional</p> |
| Qualifications | <ul style="list-style-type: none"> •Conducts full health/academic assessments •Makes lesson/health plans •Accountable for the plan •Train and delegates work to unlicensed professionals •Manages and supervises | <ul style="list-style-type: none"> •Implements the lesson/health plan •Make focused assessments according to parameters set up by professional | <ul style="list-style-type: none"> •Follows academic or health plan |

School Nursing Framework

Framework for 21st Century School Nursing Practice™



BETTER HEALTH.
BETTER LEARNING.™

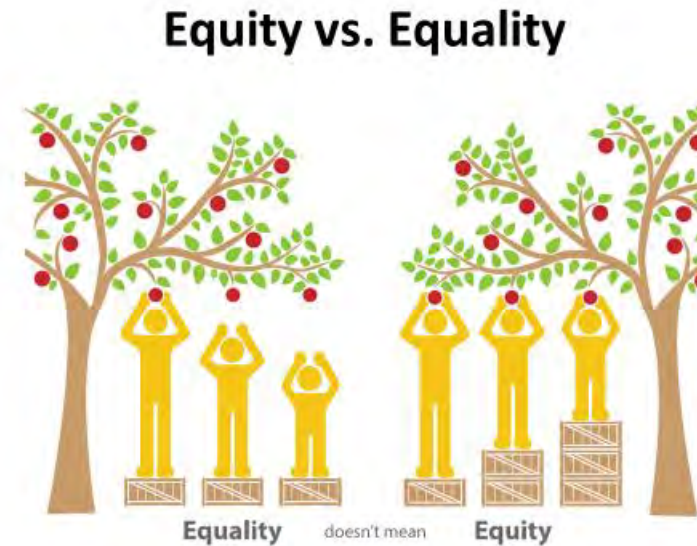


Nursing Framework



Equity and School Nursing

- School nursing services are key to helping schools reach educational equity for students.



How School Nurses Benefit Schools

School Nurse Economic Value

- Attendance
- Academics
- Accountability
- Staff wellness
- Time



- Provide health professional input and direction for school and community policies and programs
- Provide health services that increase school attendance
- Educate students and staff on managing their own health and wellness
- Prevent and control the spread of communicable disease
- Administer specialized services to students (medications, insulin pumps, ventilator, tube feedings)
- Verification of immunizations
- Screening and make referrals for vision and hearing

St. Anthony-New Brighton (Mageen)

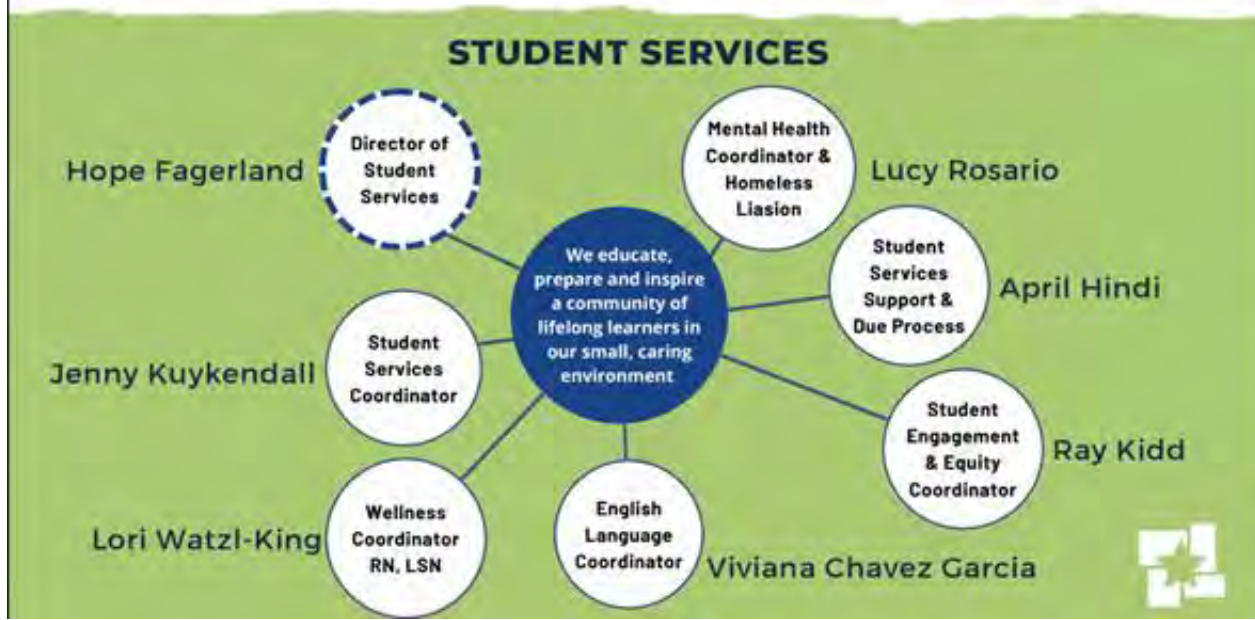
- How has the role the school nurse evolved or is evolving in the district?
- How have used the expertise of the school nurse beyond Band-Aids to help make informed decisions or policy or procedure?
- How have you recognized the expertise or the leadership of the nurse?
- How has this expertise and recognition benefited the district, students and staff?

Structures and supports

WE NURTURE THE BRILLIANCE OF EACH STUDENT



WE NURTURE THE BRILLIANCE OF EACH STUDENT



In St Anthony/New Brighton schools, our school nurse is recognized and leads as our Wellness Coordinator

Pair and Share

Share the current model of school nursing for your district.

What role does school nursing currently provide in your district?

How would envision that role to support your goals for student health, safety and educational equity?



St. Anthony-New Brighton (Mageen)

- How has St. Anthony-New Brighton school board utilized the school nurse in policy review and development?
- What does the nurse bring to the discussion? Provide examples.

Leadership and policy partnership

OUR DISTRICT

OUR SCHOOL

STUDENT & STAFF WELLNESS

St. Anthony-New Brighton School District recognizes that a school environment which supports healthy eating and physical activity also promotes students' health, well-being, and ability to learn. For more information, please contact Lori Watzl-King.

DISTRICT WELLNESS COMMITTEE

Building a strong wellness committee is critical to developing and revising a school wellness policy.

The committee includes a broad stakeholder representation, including students, parents, community members, teachers (especially physical education and health), Nutrition Services Director, School nurse, maintenance staff, and School Board representative.

Our school nurse/Wellness Coordinator leads the Wellness Committee

The School Board also partners with her through the Policy Committee to review any wellness aspects of policies we are reviewing/developing/passing

Pair and Share: Teaming with School Nurse

- Who do you currently use as “experts” related to student health and safety in your school?
- Share an example of how have you used your school nurse expertise into policy review or development
- Discuss how you could invite and incorporate the school nurse into your policy reviews or development.



What have you learned?



Action Steps

Think about 1-3 action steps you want to take as follow up.



Action: Beyond Band-Aids

Who is your school nurse?

Have you visited or your talked with your school nurse?

What is their expertise?

How will you use that expertise to make informed decisions, policy, procedures?

How will you leverage school nursing in addressing educational equity?



- **Management of Chronic Health Conditions in Schools**

[Chronic Conditions \(aap.org\)](#)

- **MDH**

[School Nursing Practice - MN Dept. of Health \(state.mn.us\)](#)

- **NASN**

[National Association of School Nurses](#)

- **School Nurse Organization of Minnesota**

[minnesotaschoolnurses.org](#)

Mageen Caines mcaines@isd282.org

Tara Cliff clifft@district112.org

Denise Herrmann

denise.herrmann@state.mn.us

Tara Swaby tara.swaby@state.mn.us

